




AC 220V LED STRIP



220 Volt System

220 volt direct input
Line voltage operation
Red/White/Green/Blue/Yellow/Amber/RGB/RGBW
No transformer needed
Crystal clear strip IP65 rated
Up to 50m per plug
Easy to install



- 220 VAC input voltage
- Operate up to a 50m continuous run per power outlet
- 13W per meter
- 50 meters per roll
- 30 led per cut point marked 
- Waterproof IP65
- Ultra bright chip SMD5050 RGBW 4IN1
- 120° wide viewing angle
- 50000 x W14mm x 8mm height (Per reel)
- No transformer needed
- Plugs Directly into 220VAC outlet or any other power source
- Shock and vibration proof
- For indoor and outdoor use
- Storage temp: 0C° - +60C°
- Operating temp: -20C - +45C°
- 2 year warranty





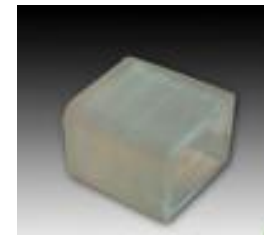
YSAC5050-60-WW	Warm white	2700-3000k
YSAC5050-60-NW	Neutral white	3800-4500k
YSAC5050-60-CW	Cool white	5500-6500k
YSAC5050-60-R	Red	620-630nm
YSAC5050-60-Y	Yellow	585-595nm
YSAC5050-60-B	Blue	465-475nm
YSAC5050-60-G	Green	515-525nm
YSAC5050-60-RGBW	Color changing	N/A



Power cord



Ribbon to ribbon connector



End cap



Clip for ribbon

INSTALLATION INSTRUCTIONS

- 1) Each of 220v LED strip light run requires a power cord and a end cap. Make sure that the power cord is attached security and correctly and the 2 wires are not touching each other. Make sure the circuit you are connecting this to is not overloaded. If you are cutting the 220V LED strip light, please make sure you are cutting the place to see how the pictures below. Cut place will be clearly visible every 0.5 meters LED strip light.
- 2) When connecting your power cord and end cap to a cut segment make sure both ends are sealed to the 220V led rgbw strip light for safety reasons using a waterproof glue/epoxy or silicone. When bending the 220V led strip light, make sure you do not bend to the point that you have to overly force the bend. Doing so can damage the internal circuitry. All 220v LED tape light connections must be connected with an waterproof junction box. You must seal all connections when used outdoors.
- 3) Neber pull or move the power cord while the 220v LED strip is turned on. Also never squeeze clamp or put any pressure on the LED strip light when powered on!
- 4) Never maintenance the 220v LED strip light when powered on. DO NOT attempt to adjust the connections or try to connect the 220v LED tape light to a power source that is already turned on. Doing so can be dangerous. Risking get a injury from electric shock.

